

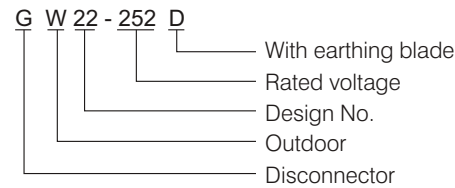


GW22-252 Outdoor AC Disconnecter of Vertical single-column & Single-arm Flexible Fold Type (252kV)

1 General

- 1.1 Application: single-column single-arm vertical fold type three-phase AC 50Hz outdoor HV electrical apparatus, for switching under no-load condition and electrical disconnection between electrical apparatus and live circuit in rated voltage 252kV power system.
- 1.2 Standard: IEC 62271-102.

2 Type Designation



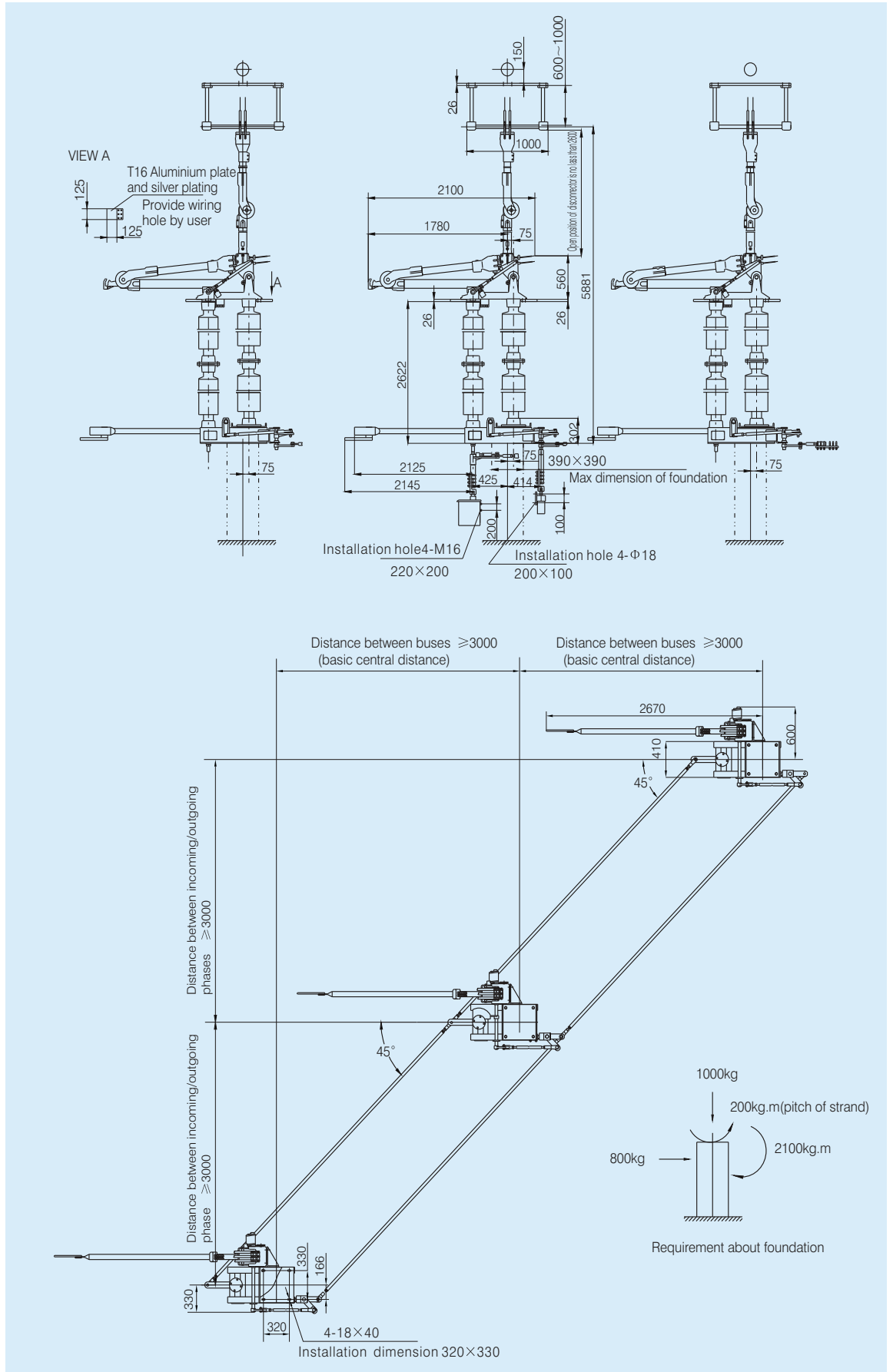
3 Working Condition

- 3.1 Altitude: $\leq 2000\text{m}$
- 3.2 Ambient air temperature: $-40^{\circ}\text{C} \sim +40^{\circ}\text{C}$
- 3.3 Max wind velocity: 34m/s
- 3.4 Seismic: Horizontal acceleration: 0.250g
Vertical acceleration: 0.125g
- 3.5 Thickness of ice covering: $\leq 10\text{mm}$
- 3.6 Pollution level of insulator: III (25mm/kV), IV (31mm/kV)
- 3.7 Installation area without fire, explosion, chemical corrosion and frequent shocking.

4 Technical Parameter

Item	Unit	Parameter		
Rated voltage	kV	252		
Rated current	A	3150		
Rated short time withstand current, 3s	kA	50		
Rated peak withstand current	kA	125		
Rated power frequency withstand voltage (rms)	To earth	kV	460	
	Open contacts	kV	460+145	
Rated lightning impulse withstand voltage (peak)	To earth	kV	1050	
	Open contacts	kV	1050+200	
Mechanical strength of terminals	Longitudinal	N	2000	
	Horizontal	N	1000	
	Vertical	N	1250	
Rated contact field (hard wire/soft wire)	Total drift of Level Y	mm	150	
	Vertical shift Z	mm	150	
	Longitudinal displacement of support conductor X	mm	150	
Min failing load	N	8000		
ES induction current switching capability	Electromagnetic coupling	Rated induction current	A	80
		Rated induction voltage	kV	1.4
	Electrostatic coupling	Rated induction current	A	1.25
		Rated induction voltage	kV	5
Open/close bus switching circuit	A	1600		
Mechanical life	Time	3000		
Single pole weight	kg	700		

5 Outline and Installation Dimension (Unit: mm)





6 Ordering Information

Please specify the following items when ordering:

- 6.1 Model, specification and quantity of disconnecter.
 - 6.2 Rated current, rated short time and peak withstand current.
 - 6.3 Pollution level and altitude.
 - 6.4 Indicate if fitted with earthing blade or electromagnetic lock.
 - 6.5 The electric motor voltage, control voltage and auxiliary poles of electric operation mechanism.
- ※ Note: Customized products are available.

